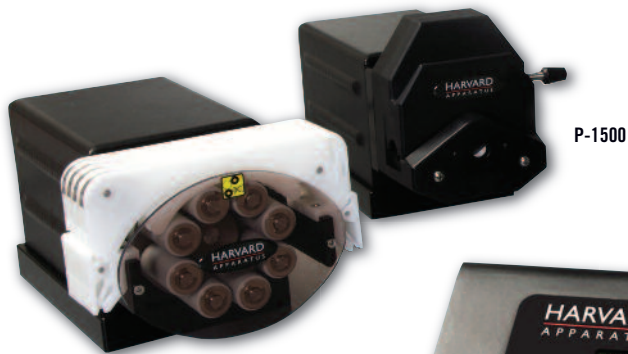
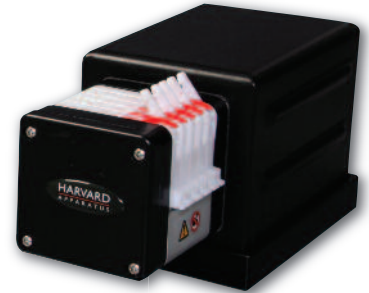


# INTRODUCING THE **NEW** **HARVARD** **PERISTALTIC PUMP**



P-1500



P-70

P-230



(Enlarged to show details)

Harvard Peristaltic Pump  
Control Box

## UNPARALLELED ACCURACY, REPRODUCIBILITY, AND EASE OF USE OVER A BROAD RANGE OF FLOW RATES

### Key Features

- Single and multi-channel options
- LCD color touch screen with intuitive icon interface for unparalleled ease-of-use
- Remote design ideal for work inside incubators and fume hoods
- Interchangeable pump heads
- A library of tubing sizes stored in the pump's memory minimizes set up time
- Custom tubing can be used allowing complete flexibility

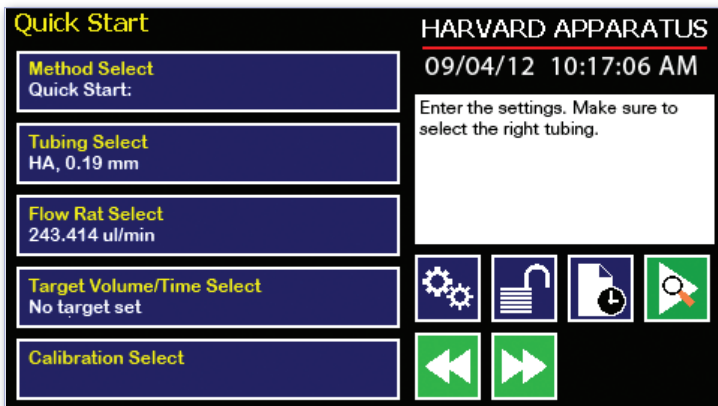
### Unparalleled Versatility

- Single channel or combined channel mode for setting flow rate
- Pump mode - runs continuously at a set flow rate
- Timed dispense - dispenses for a fixed time at a set flow rate
- Volume dispense - dispenses a fixed volume
- Foot switch control option
- Analog control option
- Bidirectional delivery
- Connectivity: USB, RS-485, I/O

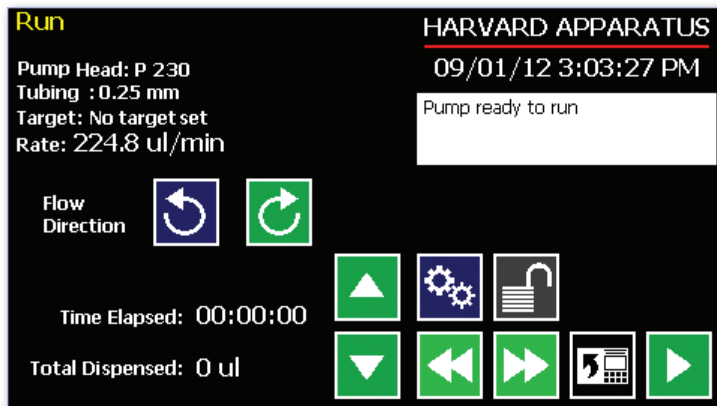
**HARVARD**  
APPARATUS CANADA

phone 514.335.0792 fax 514.335.3482 toll free 800.361.1905  
e-mail [sales@harvardapparatus.ca](mailto:sales@harvardapparatus.ca)

[www.harvardapparatus.ca](http://www.harvardapparatus.ca)



Quickstart Screen



Run Screen

## Technical Specifications

	HARVARD PERISTALTIC PUMP P-70	HARVARD PERISTALTIC PUMP P-230	HARVARD PERISTALTIC PUMP P-1500
Type	8 rollers, 5 channels	8 rollers, 4 channels	4 rollers, 1 channel
Accuracy	±1.0%	±1.0%	±1.0%
TTL Connector	15-pin D-sub	15-pin D-sub	15-pin D-sub
Computer Interface	USB Type 'B'	USB Type 'B'	USB Type 'B'
Pump-to-Pump	IEEE 1394	IEEE 1394	IEEE 1394
Back pressure	15 psi	15 psi	30 psi
Tubing ID	0.13 to 2.79 mm (0.005 to 0.11 in)	0.13 to 3.17 mm (0.005 to 0.13 in)	0.8 to 4.8 mm (0.03 to 0.19 in)
Flow Rate Range	0.001 to 70 ml/min	0.001 to 230 ml/min	0.01 to 1,500 ml/min
Dimensions: Control Box	20.7 x 13 x 9.6 cm (8.13 x 5.13 x 3.75 in)	20.7 x 13 x 9.6 cm (8.13 x 5.13 x 3.75 in)	20.7 x 13 x 9.6 cm (8.13 x 5.13 x 3.75 in)
Dimensions: Pump Head	11.5 x 25.4 x 11.8 cm (4.5 x 10 x 4.63 in)	16 x 23.6 x 11.8 cm (6.3 x 9.3 x 4.63 in)	11.5 x 24.1 x 11.8 cm (4.5 x 9.5 x 4.63 in)
Weight	4.7 kg (10.5 lbs)	5 kg (11 lbs)	5 kg (11 lbs)
Pump Voltage	30 VDC, 1.67 A	30 VDC, 1.67 A	30 VDC, 1.67 A
Power Supply	100-250 VAC, 50/60 Hz	100-250 VAC, 50/60 Hz	100-250 VAC, 50/60 Hz
For Compatible Tubing	Please call for options.	Please call for options.	Please call for options.

## Ordering Information

ORDER #	PRODUCT
70-7000	<b>Harvard Peristaltic Pump P-70</b> Includes: control unit, pump head, cartridge/cassette, and 3-Stop PVC tubing, 1.52 mm ID (pkg. of 2)
70-7001	<b>Harvard Peristaltic Pump P-230</b> Includes: control unit, pump head, cartridge/cassette, and 2-Stop Tygon R-3607 tubing, 1.52 mm ID (pkg. of 2)
70-7002	<b>Harvard Peristaltic Pump P-1500</b> Includes: control unit, pump head, cartridge/cassette, and Standard Tygon R-3603 tubing, 4.8 mm ID (7 feet)

## Replacement Parts

ORDER #	PRODUCT
70-7003	P-70 Motor Drive, 8 rollers, 5 channel
70-7004	P-230 Motor Drive, 8 rollers, 4 channel
70-7005	P-1500 Motor Drive, 4 rollers, 1 channel
70-7006	Control Box for all P Series Motor Drives
72-0604	Cartridge/Cassette for P-70
73-3052	Cartridge/Cassette for P-230